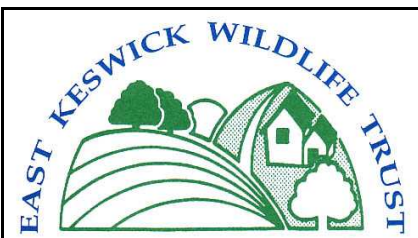


Management work in Ox Close Wood.

Management work is carried out in Ox Close Wood, mostly in winter, to maintain and improve the various habitats. In recent years we have worked on the woodland rides and felled trees to create a new ride in the woodland between the middle path and the river. We intend to control the hawthorn scrub in the sheep enclosure to retain open areas as habitat for thistles and, by consequence, the nationally rare Thistle Broomrape which grows from their roots.



AGM

Wednesday 19th May
8.00 pm
East Keswick
Methodist Church
Meeting Room

Followed by a talk by
Ann Hanson
on Mammals

Refreshments will be
served and everyone
is welcome.

Management of Ox Close

by David Taylor

Without management work trees would spread throughout the current open areas and exclude most of the flora, butterflies and other insects.

Management of Ox Close in the past.

Historically Ox Close Wood was common land for the use of the commoners of East Keswick. It extended further to the west by about 13 acres and was probably Wood Pasture up to the time of the EK Enclosure Act in approx 1800. Wood Pasture is open land with individual or small groups of trees that would have been grazed by villagers with allocated grazing rights. Hay crops would be taken to help maintain the open character.

There are distinct terraces along the length of the slopes which we have surveyed. These may be lynchettes, the result of ploughing on slopes. Following the Enclosure the area turned into broadleaf woodland and part of the area may have been managed as coppice with cutting, mainly of hazel, on a 5 to 20 year rotational basis.

Ox Close was mostly clear-felled by the Harewood Estate in the early 1990's and since the Trust's ownership there has been active management to provide a variety of habitat for wildlife. In the UK there has been significant changes to the management of woodland during the 20th century as commercial forestry increased. These have reduced the availability of habitat for woodland species leading to their decline. Coppice management is now carried out in less than 2% of British woods.

Work in Ox Close Wood.

The natural re-growth of the trees has progressively shaded out the woodland floor and narrowed the rides. Work has therefore been undertaken to open up and increase the width of the top ride by felling some of this re-growth. Glades have been formed and the ride width is now 12m in some places. Open areas have been separated into sections along the length of the ride as this helps to modify the damaging effect of the wind. On-going management of these areas is critical to the formation and continuity of wildlife habitats. A simple 2 zone system is used, where the central section is mown once or twice a year. The side areas are allowed to grow to scrub but in order to provide a continuity of habitats they will be cut down to ground level on a rotation of 4 to 7 years. They should develop a range of habitats from tall grass through to scrub.



Howard's Hot Bean Stew.

Equipment required:- Dutch Oven or similar heavy casserole pot with lid and improvised stirring device (spoon if available)

Ingredients;- Home grown or Organic Vegetables are preferred :-

- 1 Olive oil...1 large glug
- 2 Celery 1 handful
- 3 Courgette 1 handful
- 4 Carrots 2 handfuls
- 5 Onions 3 handfuls
- 6 Tomatoes 3 large handfuls
- 7 Small Diced Potatoes 1 large handful
- 8 Finely chopped sun dried tomatoes 4 pinches
- 9 Tomato Passata 1 carton
- 10 Garlic to taste or Ransomes if in season
- 11 4 large cans of various beans, Haricot, Cannelini, Flageolet or similar.
- 12 1.5 pints water or white wine
- 13 Bouquet garni of bay leaf, thyme, rosemary.
- 14 Crushed hot chilli paste + 1 or 2 whole dried Chillies
- 15 3 Good organic vegetable stock cubes
- 16 Good few pinches of salt and pepper
- 17 Fresh parsley and mint

Method:-

Chop all the vegetables to a roughly equal 1" (25mm) size except potatoes which need to be smaller.

Heat the olive oil in the pan.

Toss in all the chopped vegetables and stir well to coat, sweat gently for 5 mins then add finely diced potato



followed by all the other ingredients in order as above, take care not to over do it with the chilli paste. Cover and cook gently over a medium heat checking and stirring occasionally until thickened (approx 45mins). Finally remove bouquet garni and dried chillies then add the freshly chopped parsley and mint leaves just before serving. Best served with a crusty fresh bread and a cold beer.

Cheers!

This recipe has been researched over an open fire on a number of occasions by the resident Ox Close Catering Manager and has been well received by his ravenous crew.

Howard would like to take this opportunity to thank all his Guinea pigs!

Ox Close,

Felled trees are left in wood piles to provide sites for invertebrates which often require many seasons of undisturbed habitat in order to establish.

Flora and Fauna of Rides and Glades.

There are two main rides along the wood together with other open areas. Although their area is small their significance to wildlife is great. The habitat provided is distinctly different from the dense shaded woodland and offers both open sunny areas and woodland edge. It is sometimes classed as the rather rare habitat of 'unimproved grassland'. This is ideal for many flowers, which

...continued

in turn support butterflies and many other insects. This 'base' allows birds and small mammals to thrive.

The flowers in the rides and open areas include Primrose, Cowslip, Eyebright, Ground Ivy with occasional Common spotted Orchids.

Alder Buckthorn, the food plant of Brimstone butterfly, has been planted at the side of the rides. The Brimstone has been seen and it is hoped that this beautiful bright yellow butterfly, seen usually in the Spring, will become a common sight at Ox Close. Warmer temperatures have meant that other butterflies like the Speckled Wood can now be seen. In the early 1980's the distribution of Speckled Wood butterflies was only to the southern

part of the UK extending as far north as a line from Chester to Leicester with a population in south Lincolnshire. These butterflies are now common in our area.

We have also seen a significant increase to the Thistle Broomrape along the top ride. From an occasional plant a few years ago we recorded 38 spikes in 2009. This is partly due to the opening up of the ride to allow in more light with the resultant flora. It is thought that the seed remains viable in the ground for many years. We hope that our work will significantly increase the numbers and help secure the Yorkshire stronghold of this nationally rare plant.

Butterflies and moths

Butterflies and moths belong to the insect group called Lepidoptera, from the Greek *lepidos* meaning scale and *pteron* meaning wing. It is a very large group with more than 150,000 species of which in Britain there are about 60 breeding species of butterfly with about 2000 species of micro- and macro-moth.

I frequently get asked... "what is the difference between butterflies and moths?"

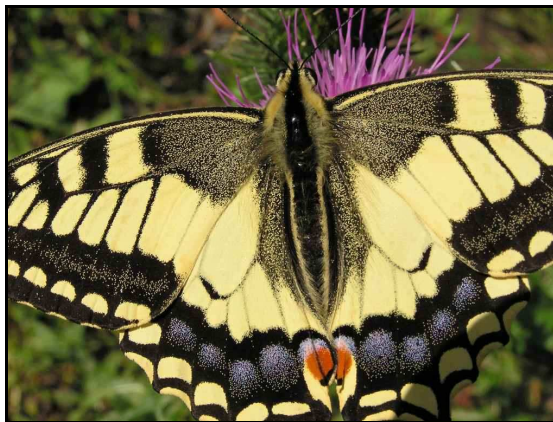
The division of Lepidoptera into moths and butterflies is one of common usage and observation. Scientifically, there is no distinction between these two types of insect: Indeed, in the Linnaean system of

classification, butterflies placed in a discreet group towards middle of the list of moths. There is as much variation between moth groups as there is between moths and butterflies. In Europe there is less distinction; for example, the French call moths "butterflies of the night".

These insects undergo complete metamorphosis going from egg to caterpillar and then to pupa from which they finally emerge as an adult.

Their colours come from pigments in the wing scales

and any iridescence is caused by interference of light as it is reflected from the surfaces of the scales as can be seen in soap bubbles.



Swallowtail butterfly showing wing scales.

Fungus Foray

Last year's fungus foray took place on 18th October... over a month later than that of 2008. The Autumn of 2009 was very dry and held back the usual fungus fruiting season. In spite of this we found a good number of species, although none was as exiting as the *Lepiota*

fuscovinacea of 2008 which then was the third find for Yorkshire. In 2008 we identified 58 species, but of the total of the 50 species encountered in 2009 a surprising 32 (64%) were different from those of 2008! This is probably due to the later time and the climatic differences of the seasons.

Committee members required

We are inviting anyone who would like to become more involved with the Trust to be nominated as a committee member. If you are interested, please contact Melanie, on telephone number 01937574140

The Duke of Edinburgh Award Scheme.

We are twin brothers, aged 14 and studying for our GCSE's. We started working towards our bronze Duke of Edinburgh last September. There are three levels within the scheme (bronze, silver and gold) and is aimed at anyone between the ages of 14 and 24. For the bronze award, we have to complete a minimum of 3 months activity for each of the Volunteering, Physical and Skills sections, and plan, train for and do a 2 day (1 night) expedition. We also have to do another 3 months in one of the Volunteering, Physical and Skills sections.

One of the good things is that we can choose the activities and projects. We thought that helping the East Keswick Wildlife Trust meant that we could do something local to our home, but also contribute to our village and local environment. We all enjoy our rural environment, so it seemed a nice idea to help.

Since January, we have been checking the Hebridean sheep each week. They graze on the important grasslands and help to maintain a diverse flora. We have also helped with the coppicing in Ox Close Wood, where we learnt new skills in cutting back the growth. It was really interesting to understand the reasons of opening up pathways to introduce light, to let certain plants grow and in turn to encourage insects and butterflies to populate the area. We have also been able to help clear the steps down through the woods too.



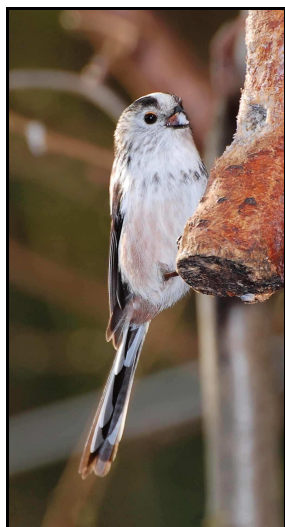
Rory and Alex Hornby repairing the steps into Ox Close. We welcome all help; young or old. So if you have any spare time coinciding with one of the work parties, please come.

E.K. Natural History Winter Bird Survey

by David Smith.

As part of our on-going natural history 10 year survey of the parish of East Keswick we undertake one day during the winter and summer to record those species of birds found in the parish. We try to cover all areas of the parish by walking the footpaths that take us through most of the kilometre squares within the parish boundary

Last year's winter survey took place on a cold day on the 18th of December. Meeting at the village post office at 9.30 we walked down to Keswick Marsh where we always find a few of the regular parish resident species. We usually record Bullfinches here, often identified by their plaintive single noted whistle call and we were not disappointed; a pair were heard and seen in the Blackthorn scrub..



Long-tailed Tit

The marsh here is a magnet for the local birdlife, we recorded a pair of Tree Creepers and Great Spotted Woodpeckers nesting here last summer but they were not to be seen on this day. In the winter months Tree Creepers join up with parties of Blue Tits, Great Tits, Coal Tits and Long-tailed Tits who work through the local woodlands in joint foraging groups. This collective foraging behaviour offers a greater chance of being warned of a predatory sparrow hawk etc. by the many watchful eyes; each of the different species having learnt the

warning call of other species in the collective group.

Our route then proceeded up Moor Lane, across Harewood Road down to the Fitts.

Viewing from the ridge overlooking the Fitts and the Wharfe Valley is a good place to watch for raptors... Sparrow Hawks, Buzzards and Red Kites are often seen soaring on the thermals across the valley and, if you are

lucky, the occasional Peregrine Falcon may be seen. Back via Harewood road to Oxclose and finally along the public footpath over the fields from the Harewood road to the village war memorial.

At the end of the day our total was a respectable 42 species of birds.

Noteworthy records were a party of 47 Northern Lapwing flying over the fields along Moor Lane and a small party of 6 Meadow Pipits feeding among a flock of sheep in the field to the side of the bridal path to the river Wharfe.

If you would like to join us on the next summer bird survey day, we meet at 4am, yes 4am on Sunday 8th May at the Crabtree lane car park for the dawn chorus walk to hear the woodland birds in Ox Close followed by a day's bird recording in the Parish.



Bullfinch

Forthcoming Events during 2010

Wednesday 5th May. Annual Bluebell walk in Ox Close. Meet at the Crabtree Lane car park at 7pm.

Saturday 8th May. Dawn Chorus and Breeding Bird Survey. Meet at the Crabtree Lane car park at 04:00 ! Anyone wishing to join up during the walk is very welcome.

Saturday 15th May. Charcoal Burn. Meet at Crabtree Lane car park at 1pm.

Wednesday 19 May. AGM. 8pm in the Methodist Church meeting room. Our speaker is Anne Hanson from the Yorkshire Mammal Group.

June. Balsam Bashing Scouts, Brownies and Cubs.

Saturday 14th August. Charcoal Burn. Meet at Crabtree Lane car park at 1pm.

Wednesday 17th November. Autumn Talk. Details to be confirmed.

Stop Press. How to identify a Harlequin Ladybird.

It is large (similar in size to a 7-spot ladybird) and has brown legs. See www.ox-close.co.uk for colour.



We need your help

Volunteers are needed for conservation work, even if you only have half an hour to spare your help would be invaluable.

Please contact us if you would like to be involved in charcoal burning and/or work parties on the reserves.

For Updates of our events on the Web visit

www.eastkeswick.org.uk then click on **Wildlife Trust.**

Newsletter Editor tel: 01904 738854 or e-mail: paul@ox-close.co.uk

For more details of any of the Trust's activities: tel. 01937 574140

Registered Charity No. 1013950